



Swingmaster™
Model SL180-13 Swingloader
Specifications

SWINGMASTER CORPORATION
11415 MELROSE AVENUE
FRANKLIN PARK, ILLINOIS 60131
Phone: 847.451.1224 Fax 847.451.1247

CAPACITY

Lifting - 13,000 pounds
Carrying - 13,000 pounds

MAINFRAME

Description - welded construction of structural steel shapes and plate.

POWERTRAIN

Engine

Make - John Deere and Cummins
Tier III - Electronic Engine

Maximum Horsepower

175 @ 2300 RPM

Peak Torque (Foot-Pounds)

482 @ 1450 RPM

Governed RPM - 2300 RPM

TORQUE CONVERTER

Stall Multiplication Ratio

1.82:1.00

Drive - Offset

Drive Ratio - 0.965:1.00

Pump Drive Ratio - 0.951:1.00

Oil Filler - Remote Mounted

TRANSMISSION

Type - "Six Speed" Power Shift

Number of Drive Gear Ratios - 3

Number of Gear Ranges - 2

Axle Disconnect - Rear Axle

Clutch Cutout - Standard

AXLES Heavy Duty Ribbed

Description - Two drive steer axles with planetary type gear reduction wheel ends.

DRIVE SYSTEM CONTROLS

Description - Air foot throttle and hand operated electronic controls for direction, gear, range, and axle disconnect.

WHEELS AND TIRES

Tires - 14.00 R 24 ** Strength Index

Wheels - Single Dish 11.25-2 Rim
65.50 inches Inside to Inside of Tires
(Loaded Section)

STEERING SYSTEM

Type - Rigid frame with steerable axles

Control - Full power Hydraulic

Selectable Modes - 4 Wheels, Crab,

Front Only and Rear Only

Turning Radius (Curb

Clearance) 20 feet 4 inches

Cylinders Double acting, 3" bore,
8.9" stroke, chrome plated piston rods.

SUSPENSION SYSTEM

Description - Rear Axle Oscillates

10 degrees on each side of center.

Automatic lockout system stops
oscillation for over the side lifting
on High Rail use.

SERVICE BRAKE SYSTEM

Type - Outboard style dual Caliper disc
brakes.

Size - 19 inch diameter Disc.

Location - Axle wheel ends

Actuation - Dual Circuit System, Air
over Hydraulic

Control - Foot control in cab

PARKING BRAKE SYSTEM

Type - Mechanical disc

Size - 13.00 inch dia.

Location - Front axle input yoke

Actuation - Spring applied, Air
released

Control - Air control button in cab

ELECTRICAL SYSTEM

Voltage - 12

Alternator output - 130 Amps

Standard Gauges - Engine Oil
Pressure, Engine Water Temp, Fuel
Tank Level, Torque Converter Oil
Temp, Trans. Clutch Pressure,
Voltmeter, Hourmeter, Air Pressure,
Engine Tachometer.

Warning Lights - Low Engine Oil
Pressure, High Engine Water Temp.,
Low Air Pressure, Alternator not
Charging

Battery - 760 Cold Cranking Amps
with Disconnect Switch

ENGINE AIR INTAKE SYSTEM

Type - Dry

Description - Two stage
(Centrifugal precleaner, Paper
Main Element) w/safety element.
Restriction Indicator - Standard,
Mounted alongside air cleaner

ENGINE EXHAUST SYSTEM

Description - Low restriction
muffler with tail pipe extension.

ENGINE COOLING SYSTEM

Description - Downflow radiator and
suction fan.

FUEL SYSTEM

Tank Capacity - 60 Gallons

Filters - Spin on primary strainer
and spin on secondary filter

Visit our Website @ www.SwingmasterCorp.com

Email: sales@swingmastercorp.com



Swingmaster™ Model SL180-13 Swingloader

COMPRESSED AIR SYSTEM

Description - 24 CFM Compressor gear driven from engine.

OPERATOR CAB

Description - Full width CrewCab 2-4 Men. Fully enclosed tiltable ROPS Cab with adjustable operator seat, heater, defroster, windshield wipers, two doors with sliding windows, interior light, and outside rear view mirror.

HYDRAULIC SYSTEM

Reservoir - 85 gallon with removable cleanout cover and padlockable filler cap.

Suction Strainers - 100 mesh strainers mounted in the hydraulic tank on each pump suction line.

Primary Pump - Double section gear type, direct driven from accessory drive on torque converter. Supplies oil flow for Boom, Attachment, and Hi-rail functions.

Secondary Pump - Double section vane type, direct driven from accessory drive on torque converter. Supplies oil flow for Steering and Remote controls.

CONTROL VALVES

Primary - Two Spool, hydraulic pilot operated with built in relief valve.

Secondary - Three spool, hydraulic pilot operated with built in relief valve.

Controls - Low effort hydraulic remote Controls for Boom Lift, Boom Swing, Tote Hook, Tilt with manual, and override on Control Valves.

CYLINDERS

Boom Lift - 2 Double acting 6.00" bore X 24.5" stroke with Hydraulic Holding Valves

Attachment Tilt - 1 Double acting 6" Bore X 34" stroke with Hydraulic Holding Valves

Filter - in Tank Mounted, return line cartridge type, 10 Micron nominally rated element

Swivel - 9 Port Hydraulic

BOOM TURNTABLE

Description - Large diameter Ball Bearing with turntable swing lock.

SWING DRIVES SYSTEMS

Type Drive - Cylinder, Chain and Sprocket

Rotation - 180 degrees (90 degrees each side of center) Speed - Equivalent to 3.0 RPM

BOOM

Construction - One piece welded design of steel plate and shapes.

MACHINES GENERAL DIMENSIONS

Weight (Base machine without Hi-rail) - 35,000 lbs.

Chassis Length - 220 inches

Chassis Width - 102 inches

Chassis Width Over Tires - 102 inches

Height - 130 inches

STANDARD EQUIPMENT

Fully Enclosed tiltable ROPS Cab, Defroster, Wipers, Adjustable Seat, Headlights, Tail and Stop Lights, Air Horn, Dome Light, Rear View Mirrors, Back-up Alarm, Engine Compartment Side Panels, Locks on all Tanks and Tool box, Quick Disconnect Hydraulic System Diagnostic Check Points, Diesel Engine, Torque converter, Powershaft Transmission, Planetary Axles, 4-Wheel Drive with Rear Axle Disconnect, 4-Wheel air over Hydraulic Brakes, 4-Wheel power steering, 16.00-25 Tires on single dish wheels, Alternator, Electric Starting, Muffler, 12 volt Battery with disconnect, Transmission De-Clutch, Dry type Air Cleaner, Hydraulic Oil Level Sight Gage, Turntable Lock, Hydraulic Filter Condition Indicator, and Cab Heater.

ACCESSORY EQUIPMENT (OPTIONAL)

High Rail Wheel Attachment, Hyd. Spare Tire Carrier, Front or Rear Mounted Winches, Couplers, Magnet Generator and Controls, Catalytic Engine Exhaust Emission converter, Fuel Water Separator, Lexan Gage Cover, Trailer Air Brake Connections, Train air Brake system, Compressed Air Dryer, Hyd. Test Gauges, Axle Mounted Hub Odometer, Automatic Engine Shutdown System, Ether Start Kit, Transmission Oil Heater, Engine Oil Heater, Engine Water Heater, Hydraulic Oil Heater, Windshield Washer, Sun Visor, Air Conditioning, Additional seating, Lexan Cab Windows, Rotating Light, Strobe Light, Flood Lights, Turn Signals with 4-way Flasher, Slow moving Vehicle Sign, Fire Extinguisher, Battery Operated, Hyd. pump back-up System, Tilt Steering Wheel, Pump disconnect.

BOOM MOUNTED

ATTACHMENTS (OPTIONAL)

Quick Coupler, Buckets, Crane Booms, Forks, Tote Hooks, Boom Extensions, Backhoe, Brushcutter, Snow Plows and Snow Buckets, Clamshells, Grapples, Magnets, Rotary Boom, Rail Tong (Standard and Hydraulic) and Augers, and Tie Exchanger.

Additional Attachments and Information Available on Request

Materials and Specifications are subject to change without notice. Some equipment described is optional and available at additional cost.

Manufactured by:

SWINGMASTER

11415 Melrose Avenue
Franklin Park, IL 60131-1324

Phone: 847-451-1224

Fax: 847-451-1247

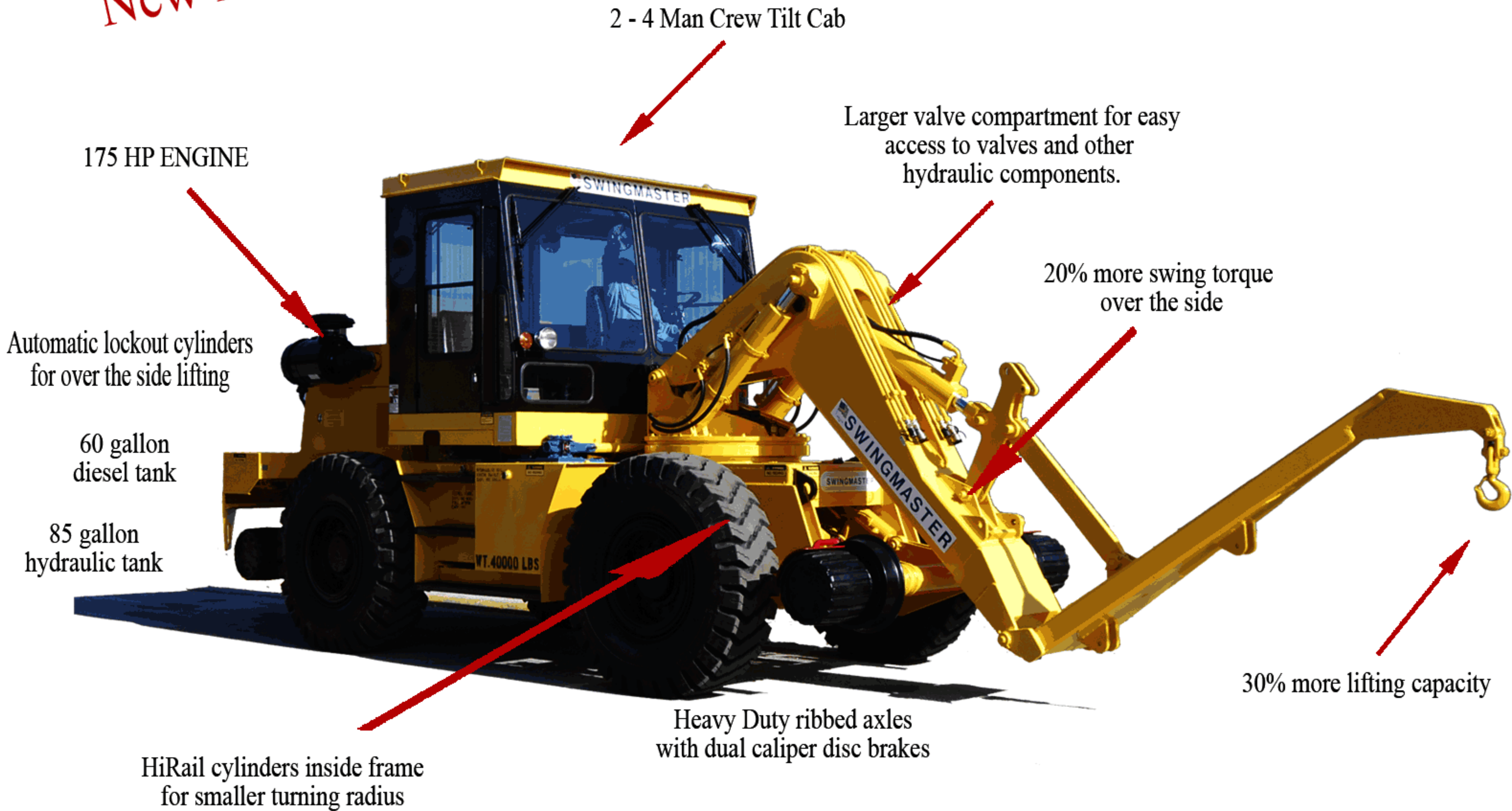
Visit our Website @ www.SwingmasterCorp.com

Email: sales@swingmastercorp.com



SWINGMASTER CORPORATION
11415 MELROSE AVENUE
FRANKLIN PARK, ILLINOIS 60131
Phone: 847.451.1224 Fax 847.451.1247
Email: sales@swingmastercorp.com

New Model



2 - 4 Man Crew Tilt Cab

Larger valve compartment for easy access to valves and other hydraulic components.

175 HP ENGINE

20% more swing torque over the side

Automatic lockout cylinders for over the side lifting

60 gallon diesel tank

85 gallon hydraulic tank

30% more lifting capacity

Heavy Duty ribbed axles with dual caliper disc brakes

HiRail cylinders inside frame for smaller turning radius

SL-180-13 13,000 pound lift capacity
HiRail, Tote Hook, 2-4 Man Crew Tilt Cab